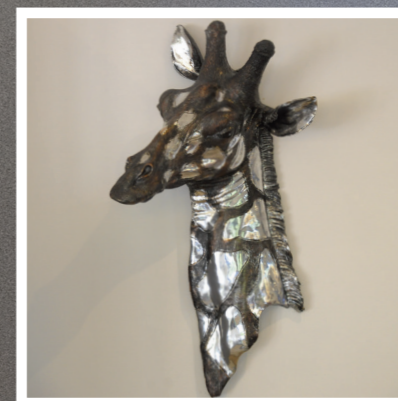




My humble ABODE

We take the tour of beautiful homes around Scotland

Who: Stephen Sutherland, 41, Company Director. **What:** Home is a bespoke detached villa. **Where:** Alloway, Ayrshire. **The dream was:** As a builder it was always my dream to build my own home, I really wanted to create somewhere that I could relax with family and friends.





‘The design of the house is inspired by my travel over the years’

I started the house build in 2014 and it was completed in the summer of this year. The atrium is one of my favourite parts of the house, the light just floods in. I used to go on a lot of cruise ships for holidays and the cruise liners we travelled on always had atrium areas and glass bridges so I took inspiration from that. I thought it added an air of grandeur and I decided to include it in my house.

When it comes to décor I’m not really a fan of florals and ‘pretty’ accents. I’d consider my taste to be more paired down and chilled out, although I really do like texture.

The design of the house is inspired by my travels over the years. Asia in particular is somewhere I spent a fair amount of time. I worked with Interior Designer, Lorraine Chassels of XS Interiors on the style of the house. We wanted the house to feel stylish and sophisticated, with a good bit of personality too.

Era wise I prefer a more modern look as opposed to traditional. In a new build it makes more sense, I think that it fits in with my architectural style.

I was keen to give my twin boys a specific area to play in the house. They absolutely love having a dedicated playroom, where they can keep all their toys. It also helps confine any mess to one room! It’s a really fun space with double denim cubes, twin swivels, double art and chalkboards. I love the numbered Ralph Lauren style chests, which we use to store toys. They are really robust for children.



TOP: The design of the master bedroom was inspired by Stephen’s travels.

LEFT: Designer, Lorriane, wanted the house to feel sophisticated and stylish. BELOW: The dining table and chairs are Stephen’s favourite pieces of furniture.





FROM THE TOP
CLOCKWISE: The
coffee table was
designed especially
to fit in with the size
and style of the house;
The atrium and glass
walkway create a
focal point; Stephen's
twin boys enjoy their
playroom.



The dining room table and chairs are definitely my favourite pieces of furniture in the house; they are really eye-catching and make a real statement. I think that the stud detail gives it the feel of a boutique hotel. Plus, they are perfect for when you are cooking big family meals.

The snug is the area where we chill out as a family. The sofa is a Spanish design and I really love the loud patterns. I also really like the Versace plant pots – it gives the room a real European flavor.

In the lounge area we stuck to a monochrome palette and brought in a lot of different textures such as polished chrome and luxurious rugs with paired down linen sofas. The grand coffee table was bespoke to fit in with the size and style of the room.

For the main bedroom we wanted to bring in some of the global travel influences. The cabinets have yin yang handles and there is handmade tile art, it feels very cosy.

Although the house has only been finished for a couple of months, it already feels like home.

For more information on Lorraine Chassels' design services, or to arrange a visit to the design, studio please call 0141 942 0519, or visit exshowhousefurniture.com.

If you have a home that has the wow factor get in touch! Email: letters@no1magazine.co.uk